

Spotlight on the College Internship Program

CIP Is Undergoing a Variety of Expansion Efforts to Enhance its Cutting-Edge Programs



Heather Greene, Executive Director of CIP, shown standing alongside rendering of CIP's new Berkshire Center in Lee, Massachusetts.

2011 Marks A Year of Rapid Growth

Due to an increased demand for its comprehensive programs serving college-bound young adults with Asperger syndrome, ADHD, and other Learning Differences, the College Internship Program (CIP) is in the process of developing new sites in Long Beach, California for August 2011, as well as in Austin, Texas and London, England. Other potential new locations in the USA and abroad will be announced in the near future.

In terms of program expansion, the College Support Program (CSP), a satellite of CIP, was opened successfully near Buffalo, New York last fall. Students enrolled in this program receive individualized support as they attend several nearby colleges.

CIP's Berkshire Center in Lee, Massachusetts is currently undergoing rapid expansion. In June, the Berkshire Center will move to a new three-floor historic office building on downtown Lee's historic Main Street. The Center will feature updated offices, classrooms, wellness space, and a large multi-purpose room.

Spectrum Playhouse, Good Purpose Gallery, and Creperie

New state-of-the-art programs and services will be offered at the Berkshire Center. A creperie offering organic food and an art gallery are also under development in CIP's new building. The gallery, entitled *The Good Purpose Art Gallery*, will feature student art as well as work by other individuals on the spectrum.

Additionally, CIP plans to transform Lee's St. George's Church and Community Center into *The Spectrum Playhouse*, a new performing arts center in the Berkshires. This space will provide additional internship and career training opportunities, as well as classroom and event space for students and staff. There will also be an artist-in-residence mentorship program with studio space. Funds that are raised at the new gallery and performing arts center will help support the Student Educational Development Fund (www.sedfund.org), a non-profit entity providing financial aid for eligible CIP students.

This NewsBrief appeared in the spring 2011 issue of:

Autism Spectrum
Quarterly

For additional information about ASQ, or to
subscribe, please log onto:

www.autismmagazine.com

and visit us on Facebook.

Additional Building and Program Expansion

In California, the Berkeley Center has more than doubled in size during the past year with the addition of classrooms, offices, and a student lounge to accommodate its growing population. CIP program expansion includes the addition of a Transition Counselor to help students plan their transition from CIP to the pivotal next step, whether it's working and living independently, or transferring to another college or career program. The Transition Counselor will work closely with students and advisors during their final year at CIP.

The College Support Program (CSP), a satellite of CIP, was opened successfully near Buffalo, New York last fall.

In keeping with CIP's impressive growth, its Teen Summer Program will also expand to five locations in 2011. These include UC Berkeley, Florida Tech, University of Buffalo in New York, Indiana University, and Elms College in Massachusetts. This action-packed, two-week program is open to students ages 16-19 with Asperger's and other Learning Differences. New theme-based curricula will be offered in 2011 and will include daily topics focusing on readiness for college, practicing self-advocacy, independent living skills, and social thinking, along with plenty of fun.

A Busy Time for CIP Founder

In addition to these new developments, CIP Founder Dr. Michael McManmon is finishing his book that will be printed by Jessica Kingsley Publishers in London. Dr. McManmon will also be a featured speaker at several upcoming events including conferences in Los Angeles, Namibia, and London. 🇺🇸

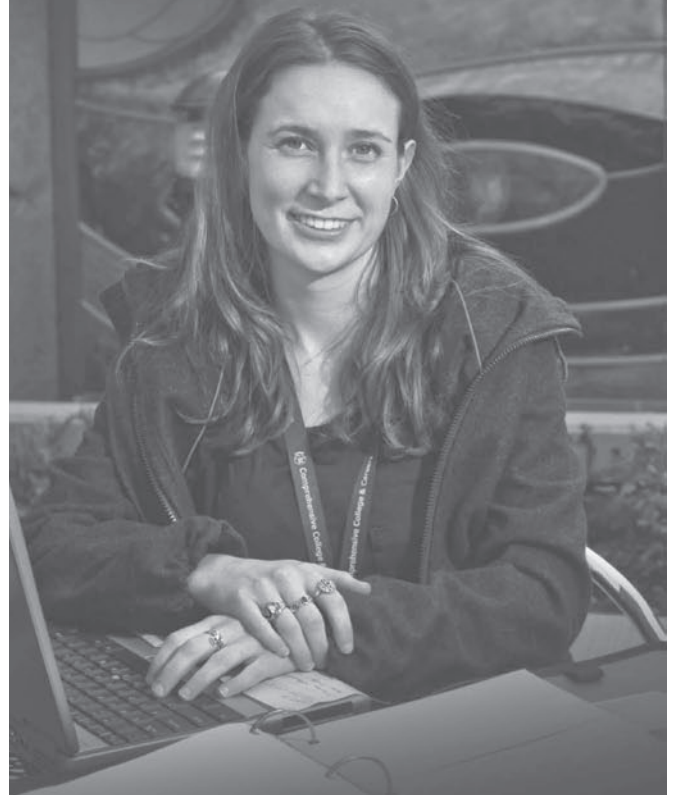
Contact Information about Open Houses and Tours

The College Internship Program provides individualized social, academic, career, and life skills instruction for young adults 18-26 with Asperger's, NLD, ADHD and other Learning Differences. To learn more about what's new at CIP, please visit: www.collegeinternshipprogram.com or call (877) 566-9247 or (877) KNOW-CIP.



College
Internship
Program

***Preparing Young Adults
with Asperger's and LD
for Success - since 1984***



Our goal is to inspire independence and expand the foundation on which you can build a happy and productive life. Learn more about our social, academic, career and life skills programs for *Asperger's and LD*.



CIP
SUMMER
Program

2 weeks of college
transition experiences for
teens with ASD and LD!

Call us at (877) 566-9247

www.CollegeInternshipProgram.com